

2026 SPORTAGE X-LINE AWD

MODEL/OPT.CODE: 4AC2455 / 10
 EXTERIOR COLOR: EBONY BLACK
 INTERIOR COLOR: TERRACOTTA
 VEHICLE ID NUMBER: 5XYK6CDF0TG460068
 PORT OF ENTRY: WEST POINT

Sold To: TN041
 Kia of Cleveland
 2492 SOUTH LEE HIGHWAY
 CLEVELAND TN 37311

Ship To: TN041





STANDARD FEATURES

MECHANICAL
 2.5L Gas Direct Injection (GDI) 4-Cyl Engine
 8-Speed Automatic Transmission
 Drive Mode Select
 All-Wheel Drive w/ Terrain Mode

ADVANCED DRIVER-ASSISTANCE SYSTEMS
 Forward Collision-Avoidance Assist - Cyclist/Jct Turning
 Lane Keeping Assist & Lane Following Assist
 Driver Attention Warning & High Beam Assist
 Parking Distance Warning - Forward / Reverse
 Blind-Spot Collision Warning
 Rear Cross-Traffic Collision-Avoidance Assist
 Safe Exit Warning
 Smart Cruise Control w/Stop & Go

SAFETY
 Dual Front Advanced Airbags
 Front and Rear Seat-Mounted Side Airbags
 Full-Length Side Curtain Airbags
 Electronic Stability Control
 Downhill Brake Control & Hill-Start Assist Control

INTERIOR, COMFORT & CONVENIENCE
 12.3" Touchscreen w/Wireless Android Auto & Apple CarPlay
 Kia Connect w/Comp 3-Yr Ultimate.* Where Available**
 SIRIUSXM® w/Free 3-Mo. Subscription*
 Dual-Zone Automatic Climate Control w/ Auto Defogger
 Smart Key w/ Push Button & Remote Start
 Wireless Charger (Front) / Front & Rear USB Charge Ports
 Power Driver's Seat w/ Power Lumbar
 SynTex Seating Material w/ Heated Front Seats
 60/40 Split-Folding and Reclining Rear Seats
 Leather-Wrapped Steering Wheel
 Rear Occupant Alert

EXTERIOR
 19" Alloy Wheels
 LED Projector Headlights w/ Auto-On/Off
 LED Rear Combination Lights & Daytime Running Lights
 Heated Outside Mirrors w/ LED Turn Signals
 Roof Rack, Rear Spoiler, and Rear Privacy Glass
 Compact Spare Tire

WARRANTY
 10 Year/100,000 Mile Limited Powertrain Warranty
 5 Year/60,000 Mile Limited Basic Warranty
 5 Year/60,000 Mile Roadside Assistance

MANUFACTURER'S SUGGESTED RETAIL PRICE ▶

\$ 33,090.00

ADDITIONAL INSTALLED EQUIPMENT:
 (In addition to or in place of standard features)
 Carpeted Floor Mats, X-Line
 Auto-Dimming Mirror w/ HomeLink™
 First Aid Kit, Small
 Roadside Assistance Kit

\$200.00
 \$375.00
 \$45.00
 \$75.00

MSRP INCLUDING OPTIONS

\$ 33,785.00

INLAND FREIGHT AND HANDLING

\$ 1,495.00

TOTAL MANUFACTURER'S SUGGESTED RETAIL PRICE ▶

\$ 35,280.00

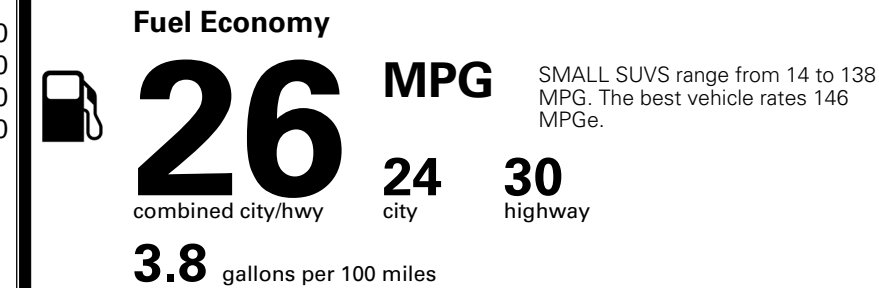
*Additional terms and conditions apply.
 **Kia Connect may be currently unavailable for some Model Year 2022 and newer vehicles sold or purchased in Massachusetts; please see owners.kia.com for more information.
 NOTE: When you purchase this vehicle, Kia America, Inc. collects personal information you provide to the dealership. For information on our collection and use of personal information and your rights, please see our Privacy Policy on www.kia.com.

TOTAL ADDITIONAL WEIGHT: 13.3



EPA DOT Fuel Economy and Environment

Gasoline Vehicle



You spend **\$1,000** more in fuel costs over 5 years compared to the average new vehicle.

Annual fuel cost **\$1,900**



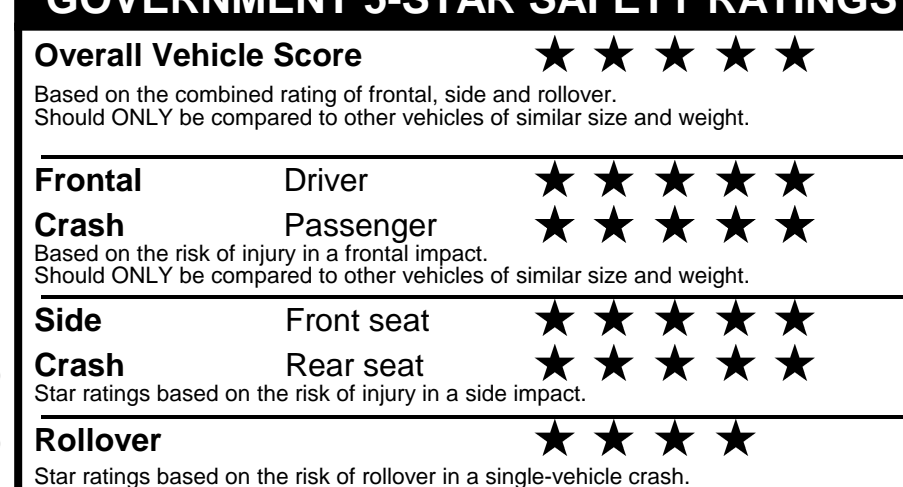
Actual results will vary for many reasons, including driving conditions and how you drive and maintain your vehicle. The average new vehicle gets 29 MPG and costs \$8,500 to fuel over 5 years. Cost estimates are based on 15,000 miles per year at \$ 3.30 per gallon. MPGe is miles per gasoline gallon equivalent. Vehicle emissions are a significant cause of climate change and smog.

fueleconomy.gov

Calculate personalized estimates and compare vehicles



GOVERNMENT 5-STAR SAFETY RATINGS



Star ratings range from 1 to 5 stars (★★★★★) with 5 being the highest.
 Source: National Highway Traffic Safety Administration (NHTSA).
www.safercar.gov or 1-888-327-4236

Manufacturer's suggested retail price includes Manufacturer's recommended pre-delivery service. License and title fees, state and local taxes and other dealer installed options and accessories are not included in the manufacturer's suggested retail price.

PARTS CONTENT INFORMATION

FOR VEHICLES IN THIS CAR LINE U.S./CANADIAN PARTS CONTENT: 55 %

MAJOR SOURCES OF FOREIGN PARTS: KOREA: 30%

NOTE: PARTS CONTENT DOES NOT INCLUDE FINAL ASSEMBLY, DISTRIBUTION, OR OTHER NON-PARTS COSTS.

FOR THIS VEHICLE FINAL ASSEMBLY POINT: WEST POINT, GA, USA

COUNTRY OF ORIGIN ENGINE (MOTOR): USA

TRANSMISSION: USA